

Linked Data Benchmark Council

First Floor, Two Chamberlain Square

Birmingham B3 3AX ● England

ldbouncil.org

LDBC Membership Joining and Renewing August 2023

Personal data policy	1
What is LDBC?	3
Taking part in LDBC	5
Annual membership fees (subscriptions)	7
Rules for members of LDBC	7
Instructions—Joining	9
Individual associate members	9
Individual voting members	9
Organizational members	10
Instructions—Renewing	11
Individual associate members	11
Individual voting members	11
Organizational members	11
How do you pay your invoice?	11
Any questions?	12
Appendix: Making payments to LDBC	13
By bank transfer	13
To our GBP account	13
To our EUR account	14
To our USD accounts	14
By credit/debit card	15

Personal data policy

LDBC gathers and retains personal information relating to its current, prospective and past members, or to their representatives and agents, and to other contributors or participants in our work. If you fall into one of these categories, then we will record your name and contact details, and keep copies of emails or other communications you have sent relating to your contributions to, membership of or business relationship with LDBC, as well as details of the amount and date of receipt of payment for membership subscriptions.

Organizational members (companies or academic institutions) *may* be required to provide additional information about the identity of their appointed representatives to LDBC, including photographic identification documents and proof of identity, including date of birth.

This type of information will *always* be required from the Directors of LDBC, who in addition will be asked to provide their residential address. *Please note that limited personal information including your full name, business address and age will be on the [public record online at Companies House](#) if you become a **Director** of LDBC.*

We use this personal information to avoid fraud, maintain the reputation and trust required to operate as a member-led and not-for-profit organization, and to administer your membership, and your technical and administrative collaborations within LDBC, and to keep you informed of LDBC activities and meetings.

We retain information relating to members for the duration of your membership and for a maximum period of two years after you cease to be a member.

LDBC will not reveal your personal information to a third party unless compelled to do so by a legal act of an authority with valid jurisdiction over the conduct of our business.

Please send an email to info@ldbcouncil.org if you have any questions or requests about your personal information recorded by LDBC or our policies with respect to personal data.

What is LDBC?

LDBC is a membership consortium of companies, academic and other non-commercial organizations and of individuals (students, researchers, consultants and developers). It continues the work of an [EU-sponsored research project](#).

LDBC as a legal entity is [a company limited by guarantee and registered in England and Wales, whose registered number is 08716467](#). It has no shareholders, and is not run for profit. All of its income comes from its members, and is spent on supporting the collaborative work of its members.

On our [website](#) we list the [companies and academic institutions which currently belong to LDBC](#).

Oracle Inc. is our founding Sponsor Member; in recent years, **Ant Group Co Ltd.** and the **Beijing Volcano Engine Technology Co.** have also become Sponsor Members of LDBC.

In 2023 there are 23 organizational members, whose membership fees finance our work. These members are our voting members: they set the policy and strategy of LDBC, and appoint the members of our small Board of Directors, who administer LDBC's business operations, and implement the members' recommendations.

In addition, there are also approximately 70 individual associate members of LDBC, who contribute practically to our work but who do not pay a membership fee.

∴

The main purposes of LDBC are laid out in the "Objects" section of the company's [Articles of Association](#) (constitution), as follows:

- To develop, maintain and evolve credible industry benchmarks for graph and RDF database systems which enable users of information technology to better compare graph and RDF technology products and competing technologies such as (but not limited to) relational database systems.
- To encourage innovation in graph and RDF technology by providing industry standards, primarily those which can measure improvements, and by participating in and organizing contributions to the formation of other related industry standards such as (but not limited to) query and schema languages, and in associated theoretical or experimental research.

∴

LDBC has defined standard benchmarks for graph analytics and transactional graph workloads. It sets the terms of use of these standards for independent, audited

measurement of products and projects running benchmark tests. This work is inspired by the example of the Transaction Processing Council.

Our work on benchmarks is summarized, with detailed references, in a paper accepted for the [TPCTC 2023](#) conference: [“The Linked Data Benchmark Council \(LDBC\): Driving competition and collaboration in the graph data management space”](#).

Note. LDBC BENCHMARK[®] is a trademark registered in many jurisdictions: only audited results of complete tests using LDBC standards can be reported as “LDBC benchmark results”. Any informal use of LDBC benchmark standards without auditing or as the basis for other derived works must explicitly state that the use or works are “not an LDBC benchmark result”. Full details are given in our [Fair Use Policies for LDBC Benchmarks[®]](#)

∴

In support of these goals LDBC also provides a venue for information exchange on topics relating to graph data management, including public Technical User Committee forums, which have generally been held once a year in conjunction with major academic conferences such as SIGMOD and VLDB.

LDBC fosters and organizes industry-academia collaborations on areas of broad interest to the membership. These collaborations currently include efforts to achieve improved standardization of query, schema and other languages, including interoperation of related standards. This work can assist in specifying effective cross-product performance and reliability comparisons, including benchmark tooling, as well as helping the use of graph data generally.

The primary focus of this kind of work over the past five years has been to assist in the development of the **SQL/Property Graph Query**, and **GQL** (Graph Query Language) international standard database languages. LDBC has a [formal liaison arrangement](#) with WG3, and LDBC representatives attend WG3 meetings and contribute work from LDBC where appropriate.

LDBC organizes a *GQL Standards Community* via a Basecamp site (open only to members) through which access can be gained to drafts and working papers of ISO/IEC JTC 1/SC 32 Working Group 3 (WG3), the SQL/GQL standards committee, including the current working drafts of the SQL and GQL specifications. *Please note that these documents must never be published, or distributed to non-members of LDBC.*

Examples of LDBC contributions in the database languages field include:

- Design of the [G-CORE](#), which is a composable property graph research language (published in 2018)
- Subsequent SIGMOD papers on [“PG-Keys”](#) (2021), and [“PG-Schema”](#) (2023).

LDBC members in this community have also contributed, alongside WG3 participants, to a SIGMOD 2022 paper on [“Graph Pattern Matching in GQL and SQL/PGQ”](#).

Ongoing work as of August 2023 includes a private forum for GQL and SQL/PGQ implementations, and an [LDBC Extended GQL Schema \(LEX\) Working Group](#), which is proposing possible new schema features for inclusion in future iterations of the GQL standard.

Taking part in LDBC

Any individual or institution from any country can apply to join LDBC.

When you apply to join you are bound by the constitution ([Articles of Association](#)) and additional rules ([Bye-laws](#)) of the company, and you have to agree to the intellectual property agreements which enable LDBC to incorporate your contributions into publications and standards created by LDBC.

LDBC is governed by its Board of Directors, which consists of 3-5 members. Decisions on strategic directions, budget, acceptance of benchmark standards, etc. are set by the **Members Policy Council**.¹

There are two kinds of individual members: associate and full.

Individual associate members take part in task forces or working groups which define benchmark standards and processes, or examine interesting graph data technical issues. They do not take part in Members Policy Council meetings, and they do not have to pay a membership fee.

Individual voting members can take part in the Members Policy Council, and pay an annual membership subscription.

Organizations, including **companies** and **academic institutions**, are always full members of LDBC: they are entitled to appoint a member to the Members Policy Council, and can vote in company membership meetings or on member resolutions.

If you are an employee or agent of an organization member, who is not appointed to the Members Policy Council, then you cannot join as an Individual voting member, but you automatically have the same rights of participation in LDBC activities as Individual associate members.

¹The Members Policy Council is officially called the “Members Council”. This document uses the term “Members Policy Council” (MPC) to emphasize that not all members are part of the Member Policy Council. Individual associate members are not allowed to vote in MPC meetings, and attend by invitation only. Organizational voting members may choose to not take part in its work.

Individual associate members of LDBC do not have a vote, but can participate and speak at company meetings.

Full individual members are appointed as Members Policy Council members when their application to join is approved by the Members Policy Council: their numbers are limited and a full individual member is likely to already be heavily involved in contributing to LDBC's work before being invited to become a voting member who will sit on the Members Policy Council.

Membership of LDBC allows you or your staff to take part in, and contribute to technical projects and to the formation of benchmark standards, under the overall direction of the Board of Directors.

The Members Policy Council is responsible for organizing administrative teams, technical work groups and other special interest groups to structure membership collaborations. While the Board has the ultimate responsibility for the operations of LDBC, it acts by taking into account the policies and strategies established by the Members Policy Council. Directors are appointed and removed by a members' meeting or by the Board after consulting the Members Policy Council.

Benchmark standards can only be adopted by a majority vote of the Members Policy Council.

Other than by a specific decision of the Members Policy Council, **no-one can take part in LDBC task force or working group meetings, or use LDBC private document repositories or discussion forums like Basecamp unless they are a member of LDBC.** Guests may be invited to LDBC meetings but cannot make contributions which are incorporated into any work product of LDBC.

Annual membership fees (subscriptions)

The annual membership fee scale is denominated in pounds sterling (GBP).

Category	Fee in GBP
Individual associate member taking part in a task force/working group	0
Reduced-rate individual full members (e.g. students, unemployed, retired), who are on the Members Policy Council of LDBC ²	10
Individual full members (who are on the Members Policy Council)	165
Non-commercial institutions (e.g. universities and research laboratories)	1,100
Commercial companies	2,200
Sponsor members	8,800

The membership year runs from 1 January to 31 December. If you are joining LDBC part way through a year then you will only be invoiced for the months remaining in the year, starting with the first month of your membership.

Rules for members of LDBC

New members are asked to complete a membership application/renewal form to ensure that they have entered into a Participation Agreement that includes

- an Individual or Organization Contributor License Agreement
- Patent Disclosure and Licensing Rules

The Contributor License Agreements only provide for Apache-style patent licence grants from contributors for software contributions to GitHub-hosted projects.

Contributors do not automatically provide patent licence grants relating to purely documentary, pictorial or verbal contributions. The Patent Disclosure and Licensing

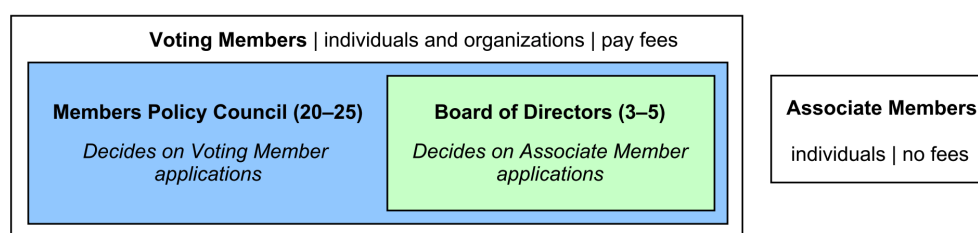
² This rate is intended for individuals with lower incomes: please use your own judgement to decide if it is the right rate for you. Please note that this rate only applies to full individual members. Individual associate members do not pay an annual subscription.

Rules oblige members to disclose patents in some limited circumstances, and also offer a standard way of providing a voluntary patent license instead of making a disclosure.

Please read the [LDBC Membership Application/Renewal Form \(August 2023\)](#) for full details: it includes links to LDBC's Articles of Association and Bye-laws, and incorporates a Membership Agreement.

These referenced and incorporated materials specify all of our obligatory intellectual property policies.

Instructions—Joining



Individual associate members

If you are joining LDBC as an individual then you are almost certainly applying to join as an Associate member. Associate membership is free, and you won't be a member of the LDBC Members Policy Council.

[If you are sure that you are going to become a voting member³, or you are renewing your individual membership as a voting member, then please skip to the next section, for Individual voting members.]

- Fill in the [LDBC Membership Application/Renewal Form](#), which should take you a couple of minutes. You can fill it and sign it with PDF tools if you wish.
- Print, sign, and scan; or sign electronically. Then, email the attachment to info@ldbncouncil.org.
- You should receive an email confirming your membership in a couple of days (it has to be approved by the Board of Directors, who administer LDBC).
- You should contact the lead for each Task Force or Working Group you plan to join. If you don't know who to contact, send an email to the same address.

Individual voting members

Only follow these steps, if you are joining LDBC as an *Individual voting member*, or you are renewing your individual membership as an Individual voting member. You should only apply to join as an individual voting member if you have been invited by an LDBC voting member.

[If you are being appointed as an Members Policy Council member to represent your company or institution then please skip to the next section, for Organizational members.]

- Fill in the [LDBC Membership Application/Renewal Form](#), which should take you a couple of minutes. You can fill it and sign it with PDF tools if you wish.

³ You will know this because you'll have been talking to someone on the LDBC Board of Directors (Oskar van Rest, Alastair Green, Shipeng Qi, or to one of LDBC's advisors (Peter Boncz, Gabor Szarnyas) about a recent invitation to join the LDBC Members Policy Council as an individual voting member. .

- Please email the signed form to info@ldbcouncil.org.
- Your application will have to be approved by LDBC's Members Policy Council. This may take a couple of weeks. We'll keep in touch and make sure you're informed about our activities while this formality is completed.
- Once your application is accepted you will receive a membership invoice, with a payment link embedded.
- Click on the invoice payment link to [pay by credit/debit card](#) (or pay by bank transfer in [EUR](#), [GBP](#) or [USD](#)).

Organizational members

Please contact the LDBC Board of Directors at info@ldbcouncil.org before making a formal application for your organization to join. If you're already in touch, then please:

- Fill in and sign the [LDBC Membership Application/Renewal Form](#). You can fill it and sign it with PDF tools if you wish.
- You will have to nominate an **administrative contact**, who will handle financial matters for you.
- You will also have to nominate an **authorized representative** of your organization to act on your behalf in any vote of members, e.g. at a General Meeting of the voting members.
- If you choose to appoint a **member of the Members Policy Council** (MPC) then you can also complete their details.
- These three roles can be performed by one, two or three individuals. Normally your authorized (voting) representative and MPC member will be the same person, but that is entirely your choice as an organization.
- Fill/sign/scan both documents, and email them to info@ldbcouncil.org (or email a link to a copy in a cloud service).
- Your organization's application will have to be approved by a vote of LDBC's Members Policy Council. This should take no more than a couple of weeks. We'll keep in touch and make sure you're informed about our activities while this process is being completed.
- Once your application is accepted you will receive a membership invoice, with a payment link embedded.
- Pay by bank transfer in [EUR](#), [GBP](#) or [USD](#) (the preferred method), or click on the invoice payment link to [pay by credit/debit card](#). We can invoice you in any of these three currencies, if necessary converting at the exchange rate of the invoice

date. Please let us know if you want to be invoiced in USD or EUR rather than in our default of GBP.

Instructions—Renewing

Individual associate members

By our constitution we need to renew your membership every two years. To make this easy, we will send every individual associate member a renewal email every January. You can either reply to the email saying you'd like to continue or cancel your membership, or you can just not reply. If we haven't heard from you within thirty days of sending the renewal email, we will treat that as confirmation that you wish to remain as an Associate member of LDBC.

Individual voting members

You have received a membership invoice, with a payment link embedded.

- Click on the invoice payment link to [pay by credit/debit card](#).
- If you pay the invoice then we will treat that as *confirmation of continued membership*, equivalent to completing and returning the [LDBC Membership Application/Renewal Form](#) selecting the option in Part 4 to confirm your continued membership.

Organizational members

You have received a membership invoice.

- Pay by bank transfer in [EUR](#), [GBP](#) or [USD](#) (the preferred method), or click on the invoice payment link to [pay by credit/debit card](#).
- If you pay the invoice then we will treat that as *confirmation of continued membership*, equivalent to completing and returning the [LDBC Membership Application/Renewal Form](#) by an authorized representative of your organization, selecting the option in Part 4 to confirm your continued membership.

How do you pay your invoice?

An appendix at the end of this document shows you [how to pay your invoice](#).

Any questions?

If you have any **general questions** about membership, please contact Alastair Green (vice-chair of LDBC):

alastair.green@ldbouncil.org

+44 795 841 2107.

I am based in London (GMT/BST time zone).

For questions related to **invoices and payments**, please contact Judy Bingham, our finance administrator:

judy.bingham@ldbouncil.org

If you have any difficulty contacting us, then please contact one of the other members of LDBC's Board of Directors:

Oskar van Rest (acting chair of LDBC) oskar.van.rest@ldbouncil.org

Alastair Green (vice-chair of LDBC) alastair.green@ldbouncil.org

Shipeng Qi (benchmark experts of LDBC) shipeng.qi@ldbouncil.org

Peter Boncz (advisor of LDBC) peter.boncz@ldbouncil.org

Thank you for your interest in Linked Data Benchmark Council.

Appendix: Making payments to LDBC

[Associate members do not have to pay an annual subscription fee, in recognition of their technical contributions to task forces or working groups. The payment instructions below apply only to organizational members or to individual voting members.]

By bank transfer

We would prefer that organizational members pay by direct bank transfer, but you can pay by credit card.

Please cite our invoice number as the payment reference.

We can accept payments in

British pounds sterling (GBP)

U.S. dollars (USD)

Euros (EUR).

Your membership invoice will show the **amount due in GBP**. In some cases we may invoice in USD or Euro only, or we may show a USD or EUR equivalent amount as well. We always use the xe.com mid-market spot rate at the date/time of raising your invoice for FX conversions.

Please use one of the three bank accounts shown below as the beneficiary of your payment.

*To our **GBP** account*

These details apply to payments from UK accounts and to SWIFT payments from accounts outside the UK.

<i>Account Title</i>	Linked Data Benchmark Council
<i>Bank</i>	Wise
<i>Sort code</i>	23-14-70
<i>Account Number</i>	24935627
<i>Address</i>	56 Shoreditch High Street London E1 6JJ United Kingdom
<i>SWIFT/BIC</i>	TRWIGB2L
<i>IBAN</i>	GB31 TRWI 2314 7024 9356 27

To our **EUR** account

These details apply to payments from SEPA accounts and to SWIFT payments from accounts outside the SEPA.

<i>Account Title</i>	Linked Data Benchmark Council
<i>Address</i>	TransferWise Europe SA Square de Meeûs 38 bte 40 Brussels 1000 Belgium
<i>Bank code (SWIFT/ BIC)</i>	TRWIBEB1XXX
<i>IBAN</i>	BE83 9670 4284 0115

To our **USD** accounts

The following account receives domestic (U.S.) or international (SWIFT) **wire** payments. For domestic ACH (checking) payments see the next section.

<i>Account Title/Beneficiary</i>	Linked Data Benchmark Council
<i>Address</i>	Community Federal Savings Bank 19 W 24th Street New York, NY 10010 United States
<i>Wire transfer number</i>	026073008
<i>Bank code (SWIFT/ BIC)</i>	CMFGUS33
<i>Account Number</i>	8310541120

The following account receives **domestic ACH (checking)** payments only.

<i>Account Title/Beneficiary</i>	Linked Data Benchmark Council
<i>Address</i>	Evolve Bank and Trust 6070 Poplar Ave suite 200 Memphis TN 38119 United States
<i>Routing number (ACH or ABA)</i>	084009519
<i>Account Number</i>	9600000000101587

By credit/debit card

We would prefer that individual voting members pay by credit/debit card.
Organizational members can also pay by card, but we would prefer a direct bank transfer.

You will see a **payment link on your membership invoice** (see example below).

Description	Quantity	Unit Price	Amount EUR
LDBC Company Membership 2019	1.00	2,000.00	2,000.00
Subtotal			2,000.00
TOTAL NO VAT*			0.00
TOTAL EUR			2,000.00
GBP			1,699.12

VAT RATE	NET AMOUNT	VAT
No VAT	1,699.12	0.00

*GBP Equivalent Conversion
1 GBP = 1.17708 EUR

Due Date: 20 Dec 2019



[View and pay online now](#)